



[Click here to view in a browser](#)

Call us now on + 44 (0) 1784 222342



[Membership Benefits](#) | [Member Login](#) | [Directory of Members](#) | [Assessment Practising Certificate](#)

## Guild Gallery May 2025

Dear,

### **Annual Dyslexia Guild Online Conference 2025!**

Last chance! - if you would like your employer to pay by invoice, ensure you book before **28 May!**

You'll have the chance to listen to our four keynote speakers, who will be providing presentations about morphology, understanding and supporting dyslexia and ADHD, assessing language in adults, and guidance about gathering and interpreting qualitative data during assessments!

You will also have the opportunity to attend some add-on sessions, including a talk from a behavioural optometrist, Dyslexia Action's Shop 30th anniversary, new products for 2025 and funded apprenticeships!

The conference will take place on **Wednesday 2 July 2025**. Don't miss out on cutting edge research and best practice on a variety of topics.

Conference presentations and recordings will only be available online to those who have paid prior to the event and there will be no opportunity to purchase them after the event

Book by **28 May** if you require an invoice (select 'pay later' option on form)\*/\*\*.  
Book by **29 June** if paying online at the time of registration by debit/credit card.

Gain a 5-hour CPD attendance certificate ([2.5 hours of which is SASC accredited](#)) when you attend this event.



\*an additional charge of £25+VAT will be added to the invoice if you select this payment type

\*\*all invoice payments must be received no later than **25 June**.

[Find out more and book now](#)

## Guild Member Short Marketing Survey

Please take a minute to complete this brief survey about the publications you read and find most useful. Your feedback is helpful for us as we build the community of The Dyslexia Guild.



### Guild Member Survey - May 2025

Please take a minute to complete this brief survey about the publications you read and find most useful. Your feedback is helpful for us as we build the community of The Dyslexia Guild.

You may select more than one item in each section.

\* Indicates required question

[Take Survey](#)

## Dyslexia Action Training Courses

**Looking to renew your Assessment Practising Certificate (APC)?  
Or looking to gain an APC with SASC accredited Hours?**

We're thrilled to announce some significant enhancements to our Applying for and Renewing an Assessment Practising Certificate – short online course for eligible assessors who may be looking to gain or renew an Assessment Practising Certificate (APC).

Here's a breakdown of the exciting changes:

- There is a focus on reports for under 16s as well as over 16s
- An overview of the new [Delphi definition](#) has been provided

- Statistical and other materials have been refreshed and include information on:
  - new tests including the [Test of Dyslexia \(TOD\)](#) and [Detailed assessment of speed of handwriting 2](#) (DASH2)
  - confidence intervals and use of tables in manuals
  - the decision making behind exam access arrangements (EAA)
  - report writing style

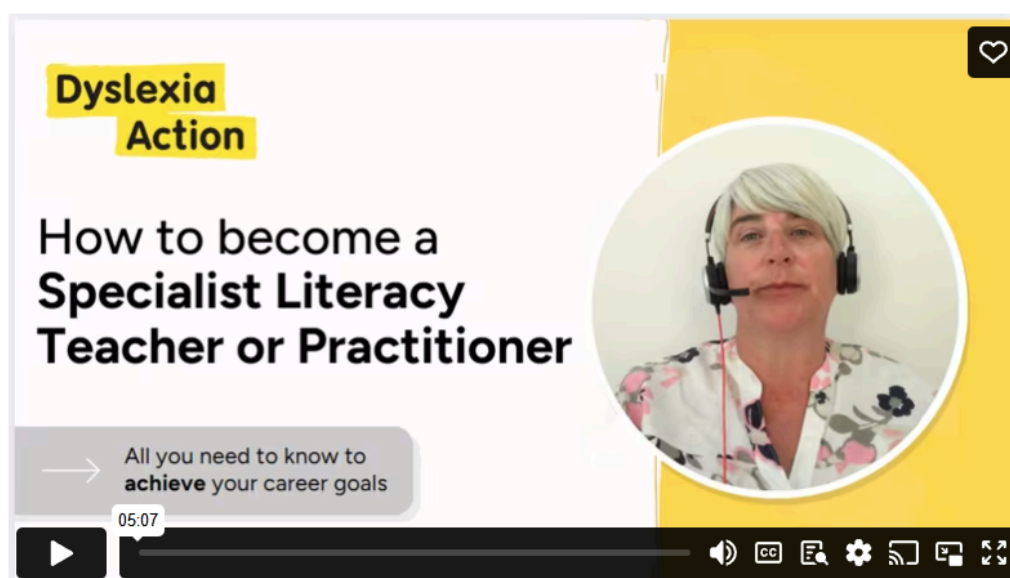
This short online course will award you with 12 CPD hours (5 of which are SASC accredited). A discount is available for Guild members.

Our next cohort with the new content included starts **21 May 2025**.

The closing date has been extended to **Sunday 18 May** if paying by debit/credit card at the time of registration (invoice upfront option now closed, bookings for the 23 July cohort open **22 May**).

[Find out more](#)

## How to Become a Specialist Teacher or Practitioner for Literacy-Related Difficulties



Working in the field of dyslexia (and other literacy difficulties) is incredibly rewarding. You will have the potential to make a meaningful difference in the lives of young people or adults, helping dyslexic students learn to read, as well as develop vital life skills.

To become qualified to provide one-to-one or group tuition for dyslexic primary, secondary or adult learners, you will need to gain a literacy-focused Level 5 or Level 7 qualification in Specific Learning Difficulties (SpLD). This will allow you to practise as a Specialist Teacher/Practitioner for Literacy-Related Difficulties - also referred to as a Dyslexia Teacher/Practitioner.

**Our next Level 5 and 7 cohorts start September and October 2025.**

[Read our recent article and watch our video guide](#)

## Accredited Online CPD Courses

Dyslexia Action's online CPD programme comprises short Units, Awards and Certificates. Boost your knowledge in supporting children or adults with specific learning difficulties including dyslexia, literacy and maths difficulties.

The programme is suitable for teachers, SENCos, practitioners, teaching assistants, learning support staff, language therapists, tutors, lecturers and the courses focus on nurturing the development of learners within the classroom/learning environment both with and without specific learning difficulties.

Our next cohort starts **21 May 2025**.

The closing date has been extended to **Sunday 18 May** if paying by debit/credit card at the time of registration (invoice upfront option open now to book for 23 July).

[Watch our CPD programme overview video](#)

Find out more

## The SpLD Assessment Standards Committee (SASC) Announce Maths Difficulties and Dyscalculia Assessment Guidance

This guidance (updated March 2025) is aimed at assessors completing a full diagnostic assessment report for Specific Learning Difficulties (SpLDs) in mathematics leading to a potential diagnosis.



There has been sufficient time since the SASC 2019 guidance on dyscalculia and maths difficulties to consider a review and update to the definition of dyscalculia and accompanying guidance and to provide additional clarity to support assessors. This is supported by the publication of key recent research papers.

The guidance aims to increase the understanding of current research evidence surrounding maths difficulties and ensure this is effectively translated into the assessment and diagnosis of dyscalculia.

Download the 'dyscalculia' SASC guidance

## What Does Audio Research Show Us?

The National Literacy Trust has published research into audio formats and reading for pleasure. One in two children and young people said listening to audio enabled them to better understand a story or subject (48.4%), made them use their imagination more than when watching videos (52.9%) and helped them relax or feel better when they were stressed or anxious (52.0%).

Read the research

## Free CPD on Secondary Reading

On 28 April 2025, the Department for Education launched new CPD on secondary reading. This initiative was co-created by Royal Holloway University in collaboration with teachers and school leaders possessing expertise in reading and secondary school environments.

This one-hour online training package is designed for all secondary school staff, empowering them to support reading skills across the entire secondary student body.

The training offers two distinct packages: one for all secondary teachers and another for school leaders. These can be completed individually or collaboratively in groups. Each package includes a series of videos accompanied by guidance and a workbook for reflection and note-taking. They present theoretical frameworks, research findings, and practical strategies that can be integrated into any secondary classroom setting.

Pilot work conducted with secondary school leaders, teachers, and teaching assistants indicates that the training effectively enhances knowledge and confidence while being feasible and accessible.

An initial trial is underway to select schools as early adopters of the training. For more information, register your interest by 19 May 2025.

[Register Interest](#)

---

## The Power of Pedagogy: Effective Practice

Published earlier this year in March, this report is an interesting exploration of case studies on teaching and learning in further education from the DfE. Overall, the report emphasizes the importance of evidence-based, metacognitive approaches in teaching, the significant role of teachers and leaders, and the profound impact of effective pedagogy on students' lives.

[Read report](#)

Do you work with further or higher education students? We have course units that can be built into a [Certificate in Supporting Adults with Dyslexia and Co-occurring Difficulties](#) to support you in your professional development.

---

## Curriculum and Assessment Review Publishes Interim Findings

The report, published in March, has a strong focus on supporting pupils with SEND and those from socio-economically disadvantaged backgrounds where there remains a stubborn attainment gap. Becky Francis and her review team finds the current system is not delivering for every child, as it sets out its next phase of work which will focus on four key areas:



- Ensuring high standards for all - exploring how curriculum and assessment can be more inclusive and equitable, to ensure excellence for all.

- Addressing subject-specific challenges, and ensuring curriculum is consistently achieving depth and breadth – including an in-depth analysis of individual subjects to ensure appropriate depth and mastery of knowledge, and that subjects are cutting edge.
- Responding to social and technological change - examining how education can better prepare students to grasp the opportunities of the future, for example heightened digital skills and media literacy to address trends in digital information and the rise of AI, and scientific and cultural knowledge to meet the challenges of climate change.
- Ensuring pathways beyond GCSE work for all - examining the current pathways to ensure they work for all young people in supporting successful routes to further study or employment, especially those from less privileged backgrounds.

[Find out more](#)

## Lost For Words

Half of primary school teachers think up to 1 in 5 children have speech and language issues and a further third think the numbers are nearer to 2 in 5. Moreover, almost all think the problem has worsened in the past five years and that it has made teaching much more difficult.

The findings, from a YouGov survey commissioned by assessment provider GL Assessment, show that teachers are grappling with increasing numbers of children starting school who have poor talking skills.

[Read more](#)

## Test of Retrieval Efficiency (TORE) \*\*AVAILABLE NOW\*\*

The Dyslexia Action Shop are pleased confirm that the new Test of Retrieval Efficiency (TORE) is exclusively available to buy now! Developed and written by Dr Anna Smith, Louise van der Valk and Sophia Butler, this innovative assessment test measures the ability of an individual to retrieve simple information from memory at speed.

It can be delivered to a group of learners in one session, making it suitable for a classroom setting. It is an analogue test, meaning no access to technology is required. The test does not involve the learner having to verbalise the answer, making it accessible to students with English as an Additional Language.

Would you like to enhance your assessment toolkit? Visit the shop to get your copy!





[Read more](#)

## Call For Participants



**Dr Steve Lukito**, Postdoctoral Research Associate presented findings from the King's College RE-STAR Research Programme at The Dyslexia Guild Online Conference in 2024. He is seeking participants to take part in a survey. The survey is open to young people with ADHD aged 18-25 years old, about the positive attitude that young people with ADHD have about their condition. Steve says "We are interested in investigating how this relates to mental health and personal characteristics such as self-esteem and other traits."

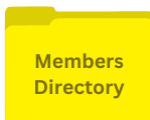
[Find out more](#)



[Visit our website for more details](#)



[Member Login](#)



[See our Professional Directory](#)



[Visit the Dyslexia Action Shop](#)



[Privacy Policy](#) | [Terms & Conditions](#) | [Manage Your Preferences](#) | [Update Your Details](#)

You are an intended recipient of this email.

To stop receiving this correspondence please use the following link: [unsubscribe](#)