



[Click here to view in a browser](#)

Call us now on + 44 (0) 1784 222342



[Membership Benefits](#) | [Member Login](#) | [Directory of Members](#) | [Assessment Practising Certificate](#)

Guild Gallery February 2026

In this edition we have highlighted just a few of the **Guild benefits** designed to support and enhance your membership with us. We also have exciting news about our up and coming annual summer online conference, features and free resources regarding Children's Mental Health and National Apprenticeship weeks. Plus, we have an update about Dyslexia Action's Developing Numeracy Skills in Learners with Dyslexia and Dyscalculia online CPD course.

The Dyslexia Guild Annual Online Conference 2026

Good progress is being made in the planning for our annual conference, which is scheduled for **Wednesday 1st July 2026**. We plan to notify you at the end of February or early March that bookings are open, so please do look out for our email.



We have some exciting topics this year including:

- The genetics of dyslexia
- Developments in academic and inclusive support provision for undergraduates with SpLDs in FE/HE
- Positive attitudes towards ADHD: measurement and associations with mental health in ADHD-diagnosed adults
- Orthographic processing and how it contributes to the assessment process.

Don't worry if you cannot attend on the day: if you book, you can still receive the slides and recordings after the event in addition to your five hours CPD certificate.

Are you a Member (MDG) grade? Would you like to attend the conference for free? Become a Fellow! You can [find out more here](#).

Exclusive Member Benefit: Free CPD Webinars

As a Dyslexia Guild member, you have **free access** to our webinars—a benefit designed to keep you at the forefront of SpLD support.

While other providers and membership bodies charge upwards of £100 for similar sessions, we provide this expert-led training at no extra cost. We believe high-quality professional development should be accessible to everyone, regardless of budget.

Why Join Our Webinars?

- Stay Current: Get the latest on SpLD trends, assessment, and policy
- Expert Insight: Learn directly from leading practitioners and researchers
- Flexibility: View live or access recordings at your convenience
- CPD Evidence: Gain essential hours for your portfolio.

Recordings include:

- What can psychology and research into memory teach us about learning and dyslexia?
- Lost for Words: a research project about language in young children
- SASC New Report Format
- Assistive Technology note taking and dictation software from CareScribe
- Supporting students with assistive technology with C-Pen 3
- Using the Intelligence and Development Scales (IDS-2) for SpLD Assessments and Reports.

Start Learning Today! Visit our dedicated member events area to browse upcoming webinars and watch previous recordings.

What our members said about the most recent webinar on memory:

"I participated in a live lecture last week. It was excellent, succinct and useful for teaching and assessing!" - Lucy Taylor - Member (MDG)

"Tom demonstrated clear expertise and delivered the content in an accessible, engaging way. His exploration of memory models and cognitive load theory highlighted the experiences of dyslexic learners and reinforced the importance of practical, evidence-informed strategies to support learning. Thank you to Tom for providing your time and expertise, and to the Dyslexia Guild for facilitating the webinar on such an important topic." - Anonymous - Member (MDG)



[Find out more](#)

Note: You will need to be logged into your member account to view these events

Explore Our E-newsletter and Magazine Digital Archives

Don't forget that your membership includes full digital access to our extensive archives. You can revisit past insights and stay informed by viewing back copies of the **Guild Gallery e-newsletter** and previous issues of the **Dyslexia Review** magazine online. These resources are a goldmine of specialist knowledge and research, available whenever you need them.

[Guild Gallery e-newsletter](#)

[Dyslexia Review Magazine](#)

Note: You will need to be logged into your member account to view these

2026 - National Year of Reading

In 2026, the [National Year of Reading](#) is reconnecting reading with the things that already inspire us – from playlists and football matches to films, food and family time. It's reading that fits how we live, not the other way around.

Explore how you can join the movement at home, in your setting, or across your community and [download the Schools and Early Years Settings Toolkit](#).



Why not update your continuing professional development with our short course [Developing Reading Skills in Learners with Dyslexia](#) which has been updated with recent research and the Delphi definition of Dyslexia.

By completing this unit, you will be able to:

- Demonstrate understanding of the impact of dyslexia on the acquisition and development of

reading skills

- Understand how learners typically acquire and develop reading skills
- Demonstrate understanding of strategies that can assist learners with dyslexia with reading
- Identify support strategies for developing higher reading skills.

Recent delegates say:

“This course has really helped me. My sessions are more organised now, and I have more resources and techniques that I use every day. Students feel more confident with reading, and I feel better able to help each one in the way they need.” November 2025

“I would recommend booking as it’s so interesting the information you find out and gain a better understanding of dyslexia.” September 2025

“I have developed a greater awareness of phonological awareness, which is crucial for reading. I can now apply various strategies to support my students' reading skills. Additionally, through exploring different resources, I have gained valuable teaching methodologies that have enhanced my knowledge and ability to address the specific learning needs of my students.” September 2025

National Apprenticeship Week



This National Apprenticeship Week (9–15 February), we're highlighting the transformative impact of apprenticeships in education.

Spotlight Apprenticeship:

Explore the **Level 5 Specialist Teaching Assistant Apprenticeship: Literacy Specialism**. This programme, co-developed by Dyslexia Action Training and delivered by [ESF Apprenticeships](#), trains Literacy Specialist TAs to effectively develop and implement literacy lessons and interventions tailored to student needs. The next cohort begins in April 2026.

[Find out more](#)

New Programme Launch:

ESF Apprenticeships is also excited to announce the launch of the new **Strategic SEND Leader** programme - the first cohort in April 2026. Key focuses of this course include executing a bespoke, high-impact inclusion improvement project and optimising team performance.

[Find out more](#)

Children's Mental Health Week

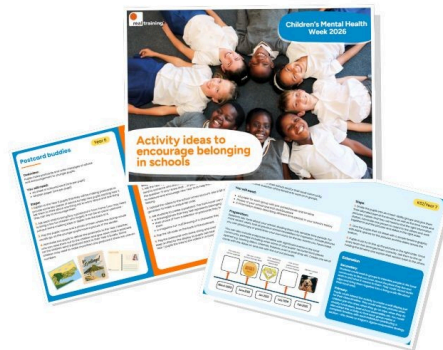
It's also Children's Mental Health Week (**9-15 February**) and this year's theme is '*This is my Place.*'

A sense of belonging in school can act as a buffer against anxiety, stress and loneliness - helping children with self-esteem, resilience and their ability to set and achieve goals in school.

Take a look at the Real Training resource to discover activities to encourage teamwork, connection and discussion about belonging.

Activity ideas for building belonging

Focused around the themes of connect, collaborate and contribute, our activity ideas are great starting points to help pupils build positive trusting relationships with one another. Activities vary in length and preparation required - many are short and easy to implement! We've included ideas for primary and secondary schools.



[Explore the resource](#)

[In case you missed them! Revisit our 2025 resources](#)

Real Group Training in Mental Health and Wellbeing

Opportunities to build expert knowledge and practical skills in Social, Emotional, and Mental Health (SEMH) are available, including:

- a fully-funded [ESF Specialist Teaching Assistant apprenticeship that includes ELSA training](#)
- Real Training's [Senior Mental Health Leadership Advanced Award](#)
- Real Training's [Level 7 Social, Emotional and Mental Health Needs module](#)
- Real Training's [MEd in Mental Health and Wellbeing in Schools and Colleges](#).



Free creative competition

Submit your students' art and poetry

The Sanctuary Foundation's '**No Place Like Home competition**' returns for a third year, in celebration of Refugee Week.

This annual art and poetry competition encourages children and young people to empathise with others their age who have had to leave their homes due to conflict or natural disaster, or to express their own lived experience of displacement.

Closing date: Wednesday 15 April

[Find out more](#)

Training courses

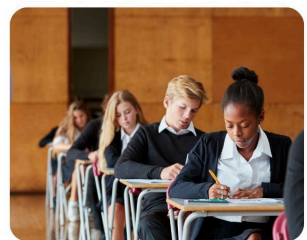
Real Training's Free Access Arrangements Update course

Don't forget our sister company Real Training offers a **free online Access Arrangements Update course** which is open to all qualified access arrangements professionals.

Join the course and you'll have access to all the information needed to be fully up to date with the new [Joint Council for Qualifications](#) (JCQ) exam regulations and requirements for 2025/26.

Upon completion, you'll gain 3 SASC-accredited CPD hours and a certificate (provided all parts are completed).

[Register here](#)

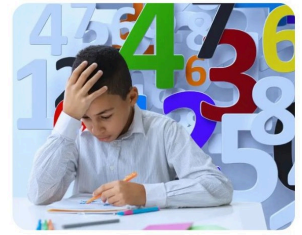


Maths Difficulties: Understanding Where the Problem Lies

Between [3-7%](#) of children are thought to have maths difficulties, including dyscalculia. As we learn more about how and why these problems arise – could the way we are teaching maths at both

primary and secondary levels be an exacerbating factor?

In this blog Real Training take a look at the latest research behind the genetic, psychological and social drivers behind maths difficulties, as well as the role of current teaching approaches. We challenge some assumptions about what it really takes to be good at maths and explain why it's important to explore alternative routes to understanding when children are struggling.



[View the full article](#)

Spotlight  on:

Developing Numeracy Skills in Learners with Dyslexia and Dyscalculia DACPD99 - New Content!

This online CPD course has been significantly updated, and now features new content focused on **numeracy across diverse settings**: the classroom, further and higher education, and the workplace.

New content has been added and updated to include:

- The Delphi definition of dyslexia, and the new SASC dyscalculia definition
- Video content on the topic of relational versus instrumental teaching for maths
- Quizzes have been developed to help you check your understanding
- New content focusing on the attributes learners with dyslexia and other co-occurring difficulties often have, and how these must be considered when structuring mathematical learning situations
- A collection of tools, resources, and strategies for supporting your teaching
- Content on math fluency and anxiety, and considerations for competence and engagement with math globally
- Using structured materials, manipulatives, and games are updated to include metacognition in solving math problems

Our next cohorts are 18 March and 20 May

[Find out more and book!](#)

What our delegates say:

"I had been concerned that the course would take me out of my comfort zone but was very pleasantly surprised at how accessible the content was. The learning has been helpful in my role as a tutor and in everyday life."

"I have enjoyed the challenge of this course. Being out of studying for a while, it's hard to get back into that way of thinking. Enjoy the input, the new terminology, the fresh perspective and the consideration for new learners."

"It is really worthwhile!"

Level 7 (Postgraduate) Certificate in Specialist Teaching for Maths-Related Difficulties

This new Level 7 Certificate delivered by our partner company Real Training can be studied as a stand-alone Postgraduate Certificate (60 masters credits) or combined with modules to achieve a Postgraduate Diploma or Master of Education on the [SEND & Inclusion](#) or the [Inclusive Educational Leadership](#) programme.

The Certificate enables delegates to develop critical thinking skills, reflective practice and disciplined enquiry through study of the theory and practice associated with the teaching and non-standardised appraisal of learners with Maths-Related difficulties.

What our delegates say:

"I am now leading on the intervention plans within the EHCPs of identified learners." S.F.

"It has helped improve all the students' mathematical development and allowed me to be more targeted with my SEN learners." T.M.

"As Head of SEND I have implemented some of these concepts into the Development Plan and ILPs along with staff CPD." N.I.

"It has given me greater confidence and knowledge of procedures and resources to help students with maths related difficulties." B.W.

[Find out more](#)

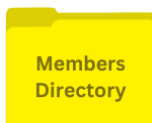
[See Dyslexia Action's full list of online courses and qualifications](#)



[Visit our website for more details](#)



[Member Login](#)



[See our Professional Directory.](#)



[Visit the Dyslexia Action Shop](#)



You are an intended recipient of this email.
To stop receiving this correspondence please use the following link: [unsubscribe](#)