



[Click here to view in a browser](#)

Call us now on + 44 (0) 1784 222342



[Membership Benefits](#) | [Member Login](#) | [Directory of Members](#) | [Assessment Practising Certificate](#)

## Guild Gallery May 2024

Dear Julie-Ann,

### The Dyslexia Guild Online Conference 2024

Have you booked your place for our annual online conference yet?

Join us online on Wednesday 3 July and gain 5 hours CPD with a certificate (2 hours of which are SASC accredited). If you cannot attend on the day the event will be recorded to watch at a later date but you will need to register and pay upfront (bookings close 5 June for those requiring an invoice upfront and 30 June for those paying by debit/credit card).

Our conference programme will include:



**'Why some of us struggle with maths, and how we might find ways to assess and support learners in the classroom'**



**'The prevalence of anxiety within dyslexic communities, and practical solutions and strategies for one-to-one study support students'**



**Re-Star Programme, King's College, London – learn about an ongoing programme entitled Regulating Emotions – Strengthening Adolescent Resilience (RE-STAR)**



**'Adult learners with dyslexia and English as an additional language: assessing and teaching'**



**The Guild Toolkit! A free resource for our members**



**An overview on the New Teaching for Maths-Related Difficulties Postgraduate Certificate**



**Dyslexia Action Shop – What's New!**

**Find Out More & Book Now!**

## **SAVE! With our Summer CPD Offer**

We have released a special summer offer for short courses **starting 10 July**. Save £10 +VAT per unit when you join our July cohort, but be quick! Offer ends Wednesday 3 July at 11.59pm\*.

Our CPD units are delivered entirely online and do not require access to a student or learner, so would be perfect to complete over the summer break.

### **Which courses are eligible for the Discount?**

The discount will apply to the following courses for the 10 July 2024 cohort:

[Dyslexia and Co-occurring Difficulties](#)

[Supporting Individuals with Memory Weaknesses](#)

[Structured, Cumulative Multisensory Tuition for Learners with Dyslexia](#)

[Developing Reading Skills in Learners with Dyslexia](#)

[Developing Writing Skills in Learners with Dyslexia](#)

[Developing Spelling Skills in Learners with Dyslexia](#)

[Supporting Adults with Dyslexia and Co-occurring Difficulties](#)

[Developing Numeracy Skills in Learners with Dyslexia and Dyscalculia](#)

[Supporting Study Skills in Adults with Dyslexia](#)

[Developing Writing Skills in Adults with Dyslexia](#)

[Dyslexia in Multilingual Settings](#)

[The Emotionally Connected Classroom\\*](#)

\*The Emotionally Connected Classroom Unit cannot be considered as suitable CPD for conditional memberships until those with provisional ADG FE/HE grade have at least completed the [Certificate in Supporting Adults with Dyslexia and Co-occurring Difficulties \(DACRT56\)](#).

[Find Out More](#)

## Already hold the the Dyslexia Action Certificate in Supporting Adults with Dyslexia and Co-occurring Difficulties (DACRT56)?

Then you may be eligible to complete our full Level 5 Diploma in Specialist Teaching for Literacy-Related Difficulties via our CPD Pathway Route (DIST 02 & 03).

Our next cohort starts on 18 June 2024 and thereafter. For further enquiries contact [trainingcourses@dyslexiaaction.org.uk](mailto:trainingcourses@dyslexiaaction.org.uk)



[Find Out More](#)

## Specialist SpLD Teacher/Practitioner and Assessor Qualifications

Starting 10 July

[Level 5 Teacher/Practitioner Diploma for non-graduates](#)

Starting 3 September

[Level 5 Teacher/Practitioner Diploma for graduates](#)

Starting 1 October

[Level 7 Teacher/Practitioner Certificate for graduates](#)

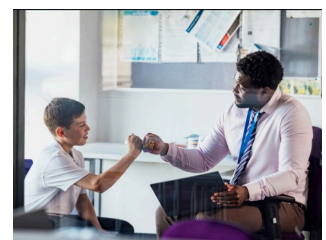
Starting 1 October

[Level 7 Teacher/Practitioner/Assessor Diploma for graduates](#)

## Senior Mental Health Leadership Funding Extended

Great news! The Department for Education (DfE) has **extended** senior mental health lead funding for another year. Now, schools have until 31 March 2025 to take advantage and use the funding to train a member of staff to take up this crucial role.

There are also **second grants** available for eligible settings who have used their funding, but whose Senior Mental Health Lead has left.



Our sister company Real Training offers two different Senior Mental Health Lead training options; a [Certificate course](#) and an [Advanced Award](#). On both courses, delegates will receive the support of a specialist Educational Psychologists, who knows and understands the mental health and wellbeing challenges faced in schools. They'll be on-hand as delegates create an effective 'Plan for Change' to improve mental health and wellbeing in their setting.

[View SMHL Courses](#)

---

## The Delphi Study - a new definition of Dyslexia

Professor Julia Carroll, Caroline Holden and Paul Thompson have been working on a paper looking at a new definition of Dyslexia. These will have implications in the assessment of specific learning difficulties (SpLD) and so the final Delphi papers will be presented at the SpLD Assessment Standards Committee [SASC conference in May](#). The draft papers are free to access but these are still drafts at this point and further changes may be made.

These draft papers are currently and openly [available on the Open Science Framework](#).

---

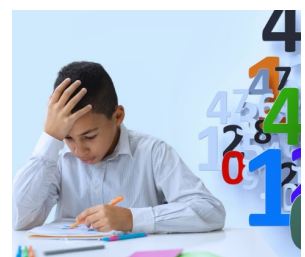
## Maths difficulties: Understanding where the problem lies

Between [3-7%](#) of children are thought to have maths difficulties, including dyscalculia. As we learn more about how and why these problems arise - could the way we are teaching maths at both primary and secondary levels be an exacerbating factor?

In this blog we take a look at the latest research behind the genetic, psychological and social drivers behind maths difficulties, as well as the role of current teaching approaches. We challenge some assumptions about what it really takes to be good at maths and explain why it's important to explore alternative routes to understanding when children are struggling.

Find out:

- Some of the reasons why maths difficulties occur
- Why certain teaching methods are making underlying problems, (as well as maths anxiety) worse
- How our own biases can lower expectations and make us poor assessors of ability
- The surprising other skills, such as spatial thinking, that could benefit all learners across all age groups



[Take a look at our top tips](#)

---

## Comic Book Research

The National Literacy Trust have published a report that explores the attitudes and beliefs of comic readers, drawing on data from children and young people aged 8 to 18 across the UK. Comics were found to be a popular format of reading, and analysis showed that those who read comics were more engaged with reading in general, regardless of their age.



Comics are a diverse medium, growing steadily in popularity over recent years, and research highlights the potential for comics to improve comprehension and understanding in learners.

[Learn More Here](#)

---

## Scheme for young adults with autism expands

Autism Unlimited in Christchurch, Dorset, launched its Futures programme in 2021 for just four young people. The scheme, to help people gain confidence and improve life skills, now has 28 learners aged between 18 and 25.

It has been described as "life-changing" for both the young people and their families and the programme is now being rolled out across the county.

[Find Out More](#)

---

## Study says children living near Sure Start centres did better at GCSEs

The [Institute for Fiscal Studies \(IFS\) study](#), funded by the Nuffield Foundation, used postcodes from when children were five years old to determine roughly how close the nearest centre was.

It then looked at the GCSE results of those children 11 years later and found "big improvements" in the performance of those living near a Sure Start centre, especially those from low-income backgrounds.

The scheme improved early support for children with special educational needs, and reduced the need for expensive education, health and care (EHC) plans in their teenage years, the IFS said.



[Read The Full Article](#)

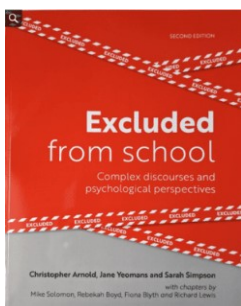
---

## New book releases - £5 discount with code RGP15

Dr Jane Yeomans, Real Training tutor and Educational Psychologist, has recently released two new books. Publisher Imaginative Minds are offering a £5 discount to members of The Dyslexia Guild. Use code RGP15 at the checkout on [teachingtimes.com/bookshop/](https://www.teachingtimes.com/bookshop/). Discount valid until 31/12/24.



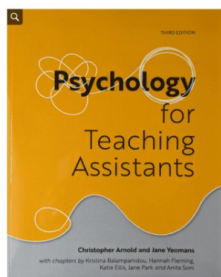
## Excluded from School – Complex Discourses and Psychological Perspectives



This book explores what happens to children and their families once a decision is made to exclude them from school. It includes interviews with children, schools, families and receiving units to build a holistic picture of the impact on all involved.

This latest edition features content from Real Training delegate, Teresa Deverick, who interviewed young adults who had attended a PRU as part of her project on our enquiry-based research module. It also includes additional chapters on the experiences of black boys and what an ideal PRU might look like.

## Psychology for Teaching Assistants



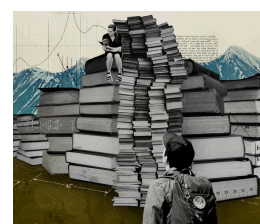
Teaching assistants need to have a particular understanding of how children's minds work. This latest extended and revised edition brings TAs up to date with the latest thinking on the psychology of human development, learning and group behaviour. It also includes additional chapters on Emotional Literacy Support Assistants and neurodiversity and emotional regulation.

[Buy Now](#)

## Higher education was easily accessible to disabled people during Covid

Rosie Anfilogoff is the winner of the 2024 [Hugo Young Award](#) (19-25 age category) for journalism and gives her views on accessibility for disabled students.

Analysis carried out by The Office for Students, the independent regulator of higher education in England, found the achievement gap between disabled and non-disabled students narrowed during the period of pandemic-induced online learning, strongly suggesting many disabled students found online delivery superior to in-person teaching.



But since the “end” of the pandemic, online learning has withered away and thousands of students have been left without sufficient access. By returning to the pre-pandemic state of affairs, universities are failing current and prospective disabled students. The return to solely in-person learning ignores everything experts in the field have recommended and, Rosie believes, neglects universities’ legal duty to make “reasonable adjustments” to ensure people with disabilities are not disadvantaged.

[Read More](#)

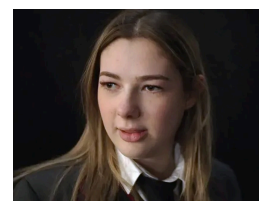
## Call for Evidence for Disabled Student Allowance

The Department for Education (DfE) has published a [call for evidence](#) inviting views from current and prospective students eligible for Disabled Students Allowance (DSA), and stakeholders working with disabled students within HE, to help improve non-medical help (NMH) provision for disabled students in Higher Education (HE). The deadline is 3 July 2024.

[Find Out More](#)

## Children who need extra learning support but do not qualify for an EHCP

The disruption and isolation of lockdown had a particularly profound impact on children with special needs, many of who did not receive the support they required. Some schools are now struggling to help pupils who find it difficult to cope.



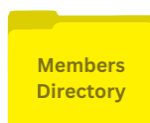
[Read Full Article](#)



[Visit our website for more details](#)



[Member Login](#)



[See our Professional Directory](#)



[Visit the Dyslexia Action Shop](#)



[Privacy Policy](#) | [Terms & Conditions](#) | [Manage Your Preferences](#) | [Update Your Details](#)

You are an intended recipient of this email.  
To stop receiving this correspondence please use the following link: [unsubscribe](#)